

# Boone County Historical Society



March-April 2025

## 2025 Meetings & Events

All BCBS meetings at the Boone County Public Library will start at 6:30 pm.

**April 26: Northern Kentucky Regional History Day** will be held at the Boone County Public Library from 8:00 am till 2:00 pm.

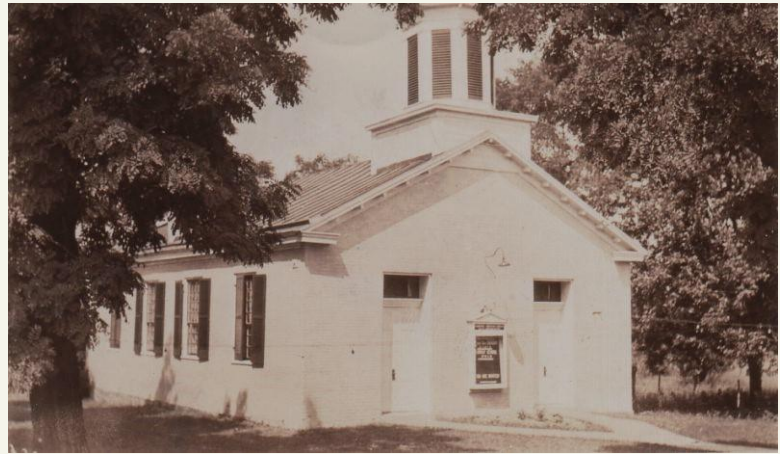
**May 15: Liza Pruiksma** will talk about the **Parker Academy in Clermont Co.**

**July 17: Out & About** at the **Big Bone Lick State Historic Site.** **Jeannine Kreinbrink, MA, RPA** will talk about National Honors and Historic Significances of this park

**September 18: Paul Tenkotte, Ph.D** will make a presentation about the **ORVILLE** Project.

**November 20: Cathy Collopy** from the Dinsmore Homestead.

**DAN KENT, RETIRED NKU PROFESSOR AND MEMBER WILL TALK ABOUT THE HISTORY OF THE FLORENCE CHRISTIAN CHURCH ON MARCH 20.**



**Florence Christian Church—1930**

Established in 1831, this church has been spreading faith and friendship in the community of Florence for nearly 200 years.

**BOB SCHRAGE AND JOHN SCHAAF WILL TALK ABOUT THEIR NEW BOOK ON APRIL 17.**



HIDDEN HISTORY of  
★ KENTUCKY ★  
POLITICAL SCANDALS



ROBERT SCHRAGE AND JOHN SCHAAF

At various points in history, Kentucky's politics and government have been rocked by scandal, and each episode defined the era in which it happened. In 1826, Governor Desha pardoned his own son for murder. In a horrific crime, Governor Goebel was assassinated in 1900. James Wilkinson was branded a traitor against Kentucky and the nation. "Honest Dick Tate" ran away with massive amounts of money from the state treasury. In modern times, Operation BOPTROT resulted in perhaps the biggest scandal in the state. Authors Robert Schrage and John Schaaf will present a fascinating account of Kentucky's history and its many unique and scandalous characters.

## SERVE & SOCIALIZE FAIR SATURDAY, APRIL 12

Boone County Public Library's Community Events Liaison, **Stella Childress**, has invited the Boone County Historical Society to again participate in the annual **SERVE AND SOCIALIZE FAIR** at the **Main Library, 10 – noon.**

The event provides an opportunity for all Boone Countians to learn about volunteer opportunities and social clubs in our County. Local organizations are invited to provide more information about their purpose and mission.

## 2025 DUES ARE DUE AT OUR MARCH MEETING

Annual dues will be accepted at our first meeting on March 20. Our dues are still \$15.00 per family. This amount is used to help cover the cost of printing and mailing our newsletters and maintaining our website. If you can't make it to our March meeting, you can mail your dues to: Boone County Historical Society, P.O. Box 23, Florence KY 41022-0023.

If you have already paid your dues for 2025, thank you.

## REMEMBERING...

David A. Osborne had been a Florence City Councilman since 1975 and a member of the Boone County Historical Society. He left behind a legacy of kindness, faith, family and leadership in our community. He had such an out-going personality that he made friends easily. Councilman, Mel Carroll, said that "David could easily be known as Mr. Florence". He served the city for over 40 years. His presence in our community will greatly be missed.

## NORTHERN KENTUCKY REGIONAL HISTORY DAY, SATURDAY, APRIL 26 BOONE COUNTY PUBLIC LIBRARY MAIN LIBRARY, BURLINGTON, KY

Registration for this event can be done at the library's service desk or at BCPL Events website.

**8-9 a./m.** Registration, (no fee), vendor area open.

**9 a.m.** **Mr. Peter Bronson**, Keynote Speaker, presents "History in Our Own Backyard"

### **10:15—11:15 a.m.** First Sessions

- Paul Tenkotte, Ph.D—**Reviving Lost Voices: Women in Civil War Cincinnati/Northern Kentucky**
- Bridget Striker—**Acknowledging Black History in Your Community**
- Karl Lietzenmayer—**Lafayette's Triumphant Farewell Visit to America in 1824-5**

### **11:30 a.m.—12:30 p.m.** Second Sessions

- Cathy Collopy—**Nineteenth-Century Cooking, Curing, and Cleaning Recipes**
- Deanna Beineke—**Yes, Fort Thomas Really Was a Military Installation**
- Jeannine Kreinbrink, MA, RPA—**Big Bone Lick State Historic Site: National Honors and Historical Significance**

### **12:45—1:45 p.m.** Third Sessions

- Stephen M. Vest—**George Graham Vest: The Life and Times of Dog's Best Friend**
- Robin Bennett—**DAR Online Resources for Genealogical Research**
- Judge Tony Frohlich—**Revolutionary War Soldiers of Boone County, Kentucky**

**1:45—2:00 p.m.**—Door Prize announced.

**NOMINEES FOR ELECTION ARE:**

Election of Officers & Directors will be held during our meeting on Thursday, April 17, 2025 at the Main Library. All positions will be elected for a 3-year term. The following nominees are:

President: **Stephen Conrad** or \_\_\_\_\_

Vice-President: **Hillary Delaney** or \_\_\_\_\_

Treasurer: **Brent Johansen** or \_\_\_\_\_

Secretary: **Pat Yannarella** or \_\_\_\_\_

Director: **Ron Buckley** or \_\_\_\_\_

Director: **Tom Schiffer** or \_\_\_\_\_

Director: **Carol Schiffer** or \_\_\_\_\_

Director: **Ginny Kohl** or \_\_\_\_\_

We are looking for members who are willing to serve as officers or directors. If you are interested in one of the positions, nominations can be made from the floor at our April meeting.

**HILLARY DELANEY...**

Due to increased family and work pressures, Hillary has decided not to continue as president of our society. She is, however, running for the office of vice-president. We so much appreciate her leadership as president in our society over the last three years.

**THE BCHS MUSEUM**

Boone County Historical Society expresses appreciation to the Boone County Judge/Executive and Fiscal Court Commissioners for permission to use the Old County Clerk’s Office as a repository for items of historical significance to Boone County’s heritage.

Directions: I-71/75 Exit 181 (KY 18 Burlington Pk). Proceed westbound 4.6 miles, turn right at the first traffic signal (Bullittsville-

Burlington Road aka Garrard St.) and then turn left into the Boone County Administration Building parking lot. The Museum is the small white brick building marked “County Court Clerk’s Office...1853” The street address is 2965 Gallatin Street, Burlington, KY 41005.

The museum will be open on the third Tuesday each month 10—1.

**UPCOMING COMMUNITY EVENTS**

The Friends of Big Bone will present the program: *Big Bone Mastodons: Their Link to Extinction and Climate Change*, by Dave Hauber on Thursday, March 27 at 6:00 pm at the Scheben Library.

The Dinsmore Homestead plans to open for the season on Saturday, April 5. Tours will be from 1—5 pm

The City of Florence will host their Easter Egg Hunt at the Thomas More Stadium at 10:00 am on Saturday, April 12.

The City of Walton will host their Easter Egg Hunt event on Saturday, April 12 at 11:00 am at the Walton City Park..

The Friends of Big Bone will present the program: *Big Bone Creek*, by Mark Jacobs on Thursday, April 24 at 6:00 pm at the Scheben Library.

The Dinsmore Homestead will host its annual Derby Day Gala on Saturday, May 3 from 3:30—7:00 pm. under the tent in the front yard. Tickets available soon — call 859-586-6117 or website [dinsmorefarm.org](http://dinsmorefarm.org)



Artwork by Pattie Purnell

# BOONE COUNTY HISTORICAL SOCIETY

P.O. BOX 23  
FLORENCE, KY 41022-0023



**Website:** [boonecountykyhistory.org](http://boonecountykyhistory.org)

Newsletter Editor: Stephen D. Conrad  
[sdconrad@fuse.net](mailto:sdconrad@fuse.net)

## ABOUT THE BOONE COUNTY HISTORICAL SOCIETY

The **mission** of the Boone County Historical Society is to develop awareness and promote appreciation of the history of Boone County, Kentucky. We are fortunate to partner with the Boone County Public Library.

The Boone County Historical Society provides program meetings at 6:30pm on the third Thursday evenings of March, April, May, July, September and November. Meetings (except for July) are held at the Boone County Public Library, Main Library, 1786 Burlington Pike, Burlington, Kentucky. July "out-and-about" meetings are held at various locations around the County.

The Society will be hosting a number of exhibits at the BCHS Museum (*see page 3*) each year. Most items for these exhibits are borrowed on a temporary basis from our members and friends, and do not belong to the Society. We greatly appreciate being entrusted with these loaned items that relate to our exhibits.

Items in our permanent collection have been donated by individuals and families, who desire to share with others items of historical significance to Boone County. Their generosity is gratefully appreciated.

**Annual membership fee is \$15 per household, due every March.** This covers the cost of printing and mailing our newsletters. Checks, payable to the Boone County Historical Society, can be mailed to the Boone County Historical Society, P.O. Box 23, Florence, KY 41022-0023.

The Boone County Historical Society has received a 501(c)(3) tax-exempt status — all gifts to the Society are tax deductible.

**All programs and exhibits are free and open to the public.**

Boone County Historical Society expresses appreciation to the Boone County Judge/Executive and Fiscal Court Commissioners for permission to use the Old County Clerk's Office as a re-

pository for items of historical significance to Boone County's heritage.

Directions: I-71/75 Exit 181 (KY 18 Burlington Pk). Proceed westbound 4.6 miles, turn right at the first traffic signal (Bullittsville-Burlington Road aka Garrard St.); turn left into the Boone County Administration Building parking lot. The Museum is the small white brick building marked "County Court Clerk's Office...1853." The street address is 2965 Gallatin Street, Burlington, KY 41005.

Officers and Board members:

President:	Hillary Delaney
Vice President:	Brent Johansen
Secretary:	Pat Yannarella
Treasurer:	Stephen Conrad
Web Master:	Jim Duvall
Board Members:	Ron Buckley
	Thomas Schiffer
	Carol Schiffer
	Ginny Kohl