

# Boone County Historical Society



May-June 2025

## 2025 Meetings & Events

All BCHS meetings at the Boone County Public Library will start at 6:30 pm.

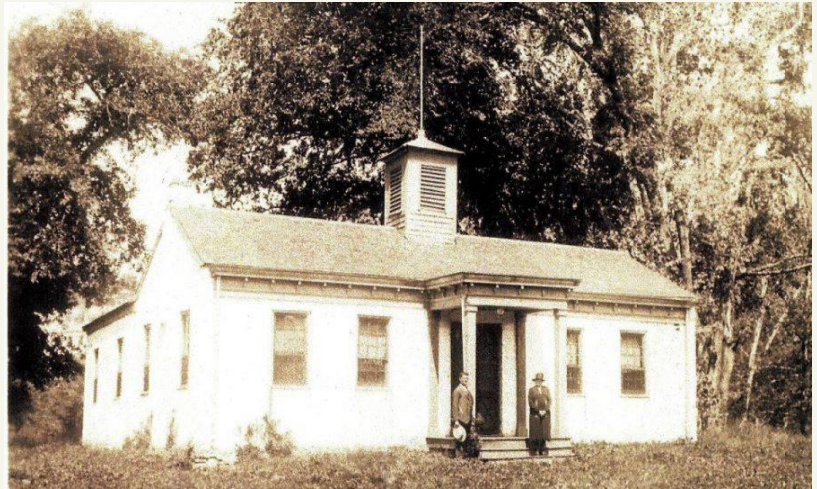
**Friday, May 9 at 10:00 am:** Big Bone Lick State Historic Site will have a dedication celebration of its designation as a National Historic Landmark. (See page 2)

**July 17: Out & About** at the Big Bone Lick State Historic Site. **Jeannine Kreinbrink, MA, RPA** will talk about National Honors and Historic Significances of this park

**September 18: Paul Tenkotte, Ph.D** will make a presentation about the **ORVILLE** Project.

**November 20: Cathy Collopy** from the Dinsmore Homestead will talk about Patty Flandrau Selmes: A child of Boone County makes her way in the world.

**LIZA PRUIKSMA WILL TALK ABOUT THE PARKER ACADEMY IN CLERMONT COUNTY AT OUR MEETING ON MAY 15 AT 6:30 PM.**



## **Parker Academy**

The Parker Academy was a school founded in 1839 in New Richmond, Ohio, by Daniel and Priscilla Parker. It is believed to be one of the first schools in the United States to offer fully integrated classrooms. Hear stories about the 50 year history of the school and what archaeological and archival work has been done to preserve its legacy.

THANK YOU .....

To **Hillary Delaney**, for serving as our President for the last three and a half years. She was appointed by the board, after Betsy Conrad's passing, and was later elected by the membership as President. Her position in the Library's Archive and History department has contributed so much to our society over these years. Due to increased family and work pressures, Hillary has declined to continue as President and any further leadership roles in our society. We will miss her and pray for her well-being.

## CELEBRATION FOR NATIONAL HISTORIC LANDMARK STATUS FOR BIG BONE LICK STATE HISTORIC SITE

The National Park Service has designated Big Bone Lick State Historic Site as a National Historic Landmark! The Park is one of only 16 properties in the United States to have both National Historic Landmark and National Natural Landmark status!

**Join us at Big Bone Lick State Historic Site on May 9th 2025 at 10am, EST, to celebrate this wonderful achievement. The event will take place at the Bison Circle Shelter. Refreshments will be provided.**

For over 250 years, Big Bone Lick has been known as a significant paleontological resource. Often referred to as the “birthplace of American Paleontology,” it is recognized as the “first major New World fossil locality known to Europeans” with global notoriety as “a place of great geological celebrity”.

Fossils obtained from Big Bone Lick’s eighteenth-century excavations may be seen today in the leading museums of Europe and the United States. Big Bone Lick’s association with early scientific expeditions and debates, and the evolution of American paleontological science, makes Big Bone Lick nationally significant in the history of science in the United States.

By: Jeannine Kreinbrink, MA, RPA

### MUSEUM OPEN ....

Starting in February, our museum has been open one day a month on the third Thursday from 10 am till 1 pm. We also open for special occasions such as Saturday, May 3rd when the garage sale is going on behind the Boone County Administration building.

**Volunteers are requested to open the museum to the public.**



### BIG BONE LICK STATE HISTORIC SITE IS A NATIONAL HISTORIC LANDMARK!

**BBL is 1 of only 16 US properties to have both  
National Natural Landmark and  
National Historic Landmark status!**

**YOU ARE INVITED TO THE  
DEDICATION CELEBRATION**

**MAY 9, 2025**

**10AM**

**The dedication ceremony will take place  
at the Bison Circle Shelter at  
Big Bone Lick State Historic Site**

*Refreshments will be served  
Please email [bblshs.friends@gmail.com](mailto:bblshs.friends@gmail.com) for more information*

*Event sponsored by Big Bone Lick State Historic Site and Friends of Big Bone*



### BEHRING CRAWFORD MUSEUM CELEBRATES 75 YEARS.....

Preparations have been underway for this museum’s 75 anniversary on July 5. They are asking individuals to tell the wonderful things they remember at the museum for the first time they visited.

### AMERICA 250! MARKER DEDICATION

The Boone County Chapter of the Daughters of the American Revolution will dedicate a marker on the grounds in front of our Historical Society’s museum. This will honor America’s 250th anniversary and the Revolutionary War patriots of Boone County. This dedication will be on September 21 at 2 pm.

## CRISLER-GULLY MILL OPEN HOUSE

The Boone County Conservation District is hosting an Open House at the Earl and Hazel Jones Center for Conservation, home of the Crisler-Gully Mill ruins.



**Earl and Hazel Jones  
Center for Conservation  
Open House**  
**Saturday, May 17  
10 a.m. to 2 p.m.**

Visit the Boone County Conservation District's new property! Hike the trails, view the ruins of a historic water mill, and learn about local conservation projects. Refreshments will be provided. See website in case of rain.

- 10 a.m. Guided Hike
- 11 a.m. Creek Critters Demo
- 1 p.m. History of the Mill
- OR Explore on your own!

**2588 Camp Ernst Lane**  
**Burlington, KY 41005**

**BCCDKY**  
Boone County Conservation  
District, Kentucky

For more information, please visit  
[bccdky.org/center-for-conservation/](http://bccdky.org/center-for-conservation/)

## UPCOMING COMMUNITY EVENTS

The **Gaines Tavern History Center** will host a **Spring Tea** on **May 18** from **2-4 pm**. Tickets for \$30.00 can be purchased at **Walton City Hall**.

The **Friends of Big Bone** will present the program: **Bees and Big Bone Lick**, by **Joanna and Ron Zembrodt**, Bee Keepers on **Thursday, May 22** at **6:00 pm** at the **Scheben Library**.

The **City of Florence** will host its **Memorial Day Parade** on **Monday, May 26** starting at **10:00 am**. Parade starts at **Boone County High School** and concludes at the **Florence Government Center**. Followed by a **Memorial Service** at the **Boone County Veterans Memorial**.

The **Dinsmore Homestead** will host a **Tea** on **Saturday, May 31**. Contact **Dinsmore Homestead** at **859-586-6117** for tickets.

The **Friends of Big Bone** will host **Discovery Days** at **Big Bone Lick State Historic Site** on **Saturday, June 14** from **11—2**.

The **Gaines Tavern History Center** will host **Murder Mystery Dinner** entitled **The Wild West** on **June 28**. Tickets are \$48.00 per person. Call **858-444-0301** for reservations.

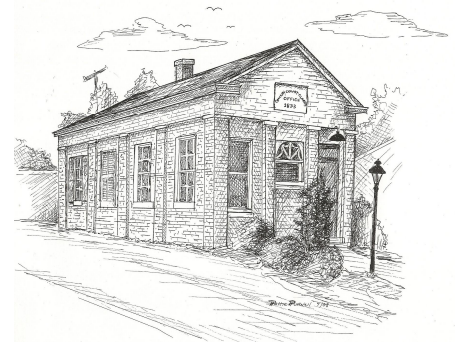
## THE BCHS MUSEUM

Boone County Historical Society expresses appreciation to the Boone County Judge/Executive and Fiscal Court Commissioners for permission to use the Old County Clerk's Office as a repository for items of historical significance to Boone County's heritage.

Directions: I-71/75 Exit 181 (KY 18 Burlington Pk). Proceed westbound 4.6 miles, turn right at the first traffic signal (Bullittsville-

Burlington Road aka Garrard St.) and then turn left into the Boone County Administration Building parking lot. The Museum is the small white brick building marked "County Court Clerk's Office...1853" The street address is 2965 Gallatin Street, Burlington, KY 41005.

The museum will be open on the third Thursday each month 10—



Artwork by Pattie Purnell

# BOONE COUNTY HISTORICAL SOCIETY

P.O. BOX 23  
FLORENCE, KY 41022-0023



**Website:** [boonecountykyhistory.org](http://boonecountykyhistory.org)

Newsletter Editor: Stephen D. Conrad  
[sdconrad@fuse.net](mailto:sdconrad@fuse.net)

## ABOUT THE BOONE COUNTY HISTORICAL SOCIETY

The **mission** of the Boone County Historical Society is to develop awareness and promote appreciation of the history of Boone County, Kentucky. We are fortunate to partner with the Boone County Public Library.

The Boone County Historical Society provides program meetings at 6:30pm on the third Thursday evenings of March, April, May, July, September and November. Meetings (except for July) are held at the Boone County Public Library, Main Library, 1786 Burlington Pike, Burlington, Kentucky. July "out-and-about" meetings are held at various locations around the County.

The Society will be hosting a number of exhibits at the BCHS Museum (*see page 3*) each year. Most items for these exhibits are borrowed on a temporary basis from our members and friends, and do not belong to the Society. We greatly appreciate being entrusted with these loaned items that relate to our exhibits.

Items in our permanent collection have been donated by individuals and families, who desire to share with others items of historical significance to Boone County. Their generosity is gratefully appreciated.

**Annual membership fee is \$15 per household, due every March.** This covers the cost of printing and mailing our newsletters. Checks, payable to the Boone County Historical Society, can be mailed to the Boone County Historical Society, P.O. Box 23, Florence, KY 41022-0023.

The Boone County Historical Society has received a 501(c)(3) tax-exempt status — all gifts to the Society are tax deductible.

**All programs and exhibits are free and open to the public.**

Boone County Historical Society expresses appreciation to the Boone County Judge/Executive and Fiscal Court Commissioners for permission to use the Old County Clerk's Office as a re-

pository for items of historical significance to Boone County's heritage.

Directions: I-71/75 Exit 181 (KY 18 Burlington Pk). Proceed westbound 4.6 miles, turn right at the first traffic signal (Bullittsville-Burlington Road aka Garrard St.); turn left into the Boone County Administration Building parking lot. The Museum is the small white brick building marked "County Court Clerk's Office...1853." The street address is 2965 Gallatin Street, Burlington, KY 41005.

Officers and Board members:

President:	Stephen Conrad
Vice President:	Maryalice Markesbery
Secretary:	Pat Yannarella
Treasurer:	Brent Johansen
Web Master:	Jim Duvall
Board Members:	Ron Buckley Thomas & Carol Schiffer Ginny Kohl Patricia Gilliland